

## Explore Suffolk's landscape

Take an easy riverbank walk. In 1/2 an hour to visit this small reserve of wet woodland – an increasingly rare and important habitat in the East of England.

## See a bit of history

Barton Mills derives its name either from the Old English agricultural term Barton, meaning barley or a threshing floor. In the 1700's this was the site of several corn mills and, latterly, wool mills. You can still see signs of their old water-feed channels running through the reserve.

## Find wildlife

The Riverside Reserve is a mosaic of six different habitats. Each has its own unique range of flora and fauna, changing with every season.

Whenever you visit you're sure to find something interesting.

## Barton Mills RIVERSIDE RESERVE

Take a walk on the wild side and see a fascinating piece of the natural world, just 1400 metres from Mildenhall's Market Cross!

## Barton Mills RIVERSIDE RESERVE

# Take a walk on the wild side



Countryside Section, Leisure Services,  
Forest Heath District Council, District Offices,  
College Heath Road, Mildenhall,  
Suffolk IP28 7EY  
Tel: 01638 719214

### For fishing permits contact:

Roger Pigham, LAPS, 8B Church Lane,  
Worlington, Suffolk  
Tel: 01638 510995

OPEN ALL YEAR.  
WHEELCHAIR FRIENDLY.  
Follow the Country Code



ENVIRONMENT AGENCY



Forestry Commission



New Opportunities Fund  
partner



Design: www.dynamiccreative.co.uk Tel: 01353 661997  
Illustrations: Ruth Palmer Photographs: Zack Barton



# A mosaic of six natural habitats, each with its own unique mix of flora and fauna

## Poplar Plantation

Poplar trees were planted on this site because they are suited to the damp conditions of the river valley. In the summer they carpet the area with cotton wool-like seeds.



Poplar

## Pine Forest

Just north of the Reserve is the southeastern edge of Thetford Forest Park. The trees found there are a mix of traditional Scots Pine and Corsican Pines. These evergreens have long straight trunks that are used in construction and for fencing, pallets and chipboard.

To Mildenhall

## Ponds

There are two ponds to visit – each a rich food source and providing safe habitat for fish, amphibians, dragonflies and birds.



Ponds are great habitats combining a wide variety of plant and animal communities both around the pond's edges and under its surface. Pond-dipping can be arranged at the spot marked\*. There you should find a wealth of insect life that feeds the pond's fish, amphibians and birds. In time we hope to attract rare creatures such as the Great Crested Newt.

## The River Lark

The River Lark supports at least 13 different types of fish. Many are food for the otter that has recently returned to the Lark. Along the bank you will find two different varieties of willow – crack and weeping. Their catkins are an early sign of spring.



Weeping Willow

## Alder woodlands

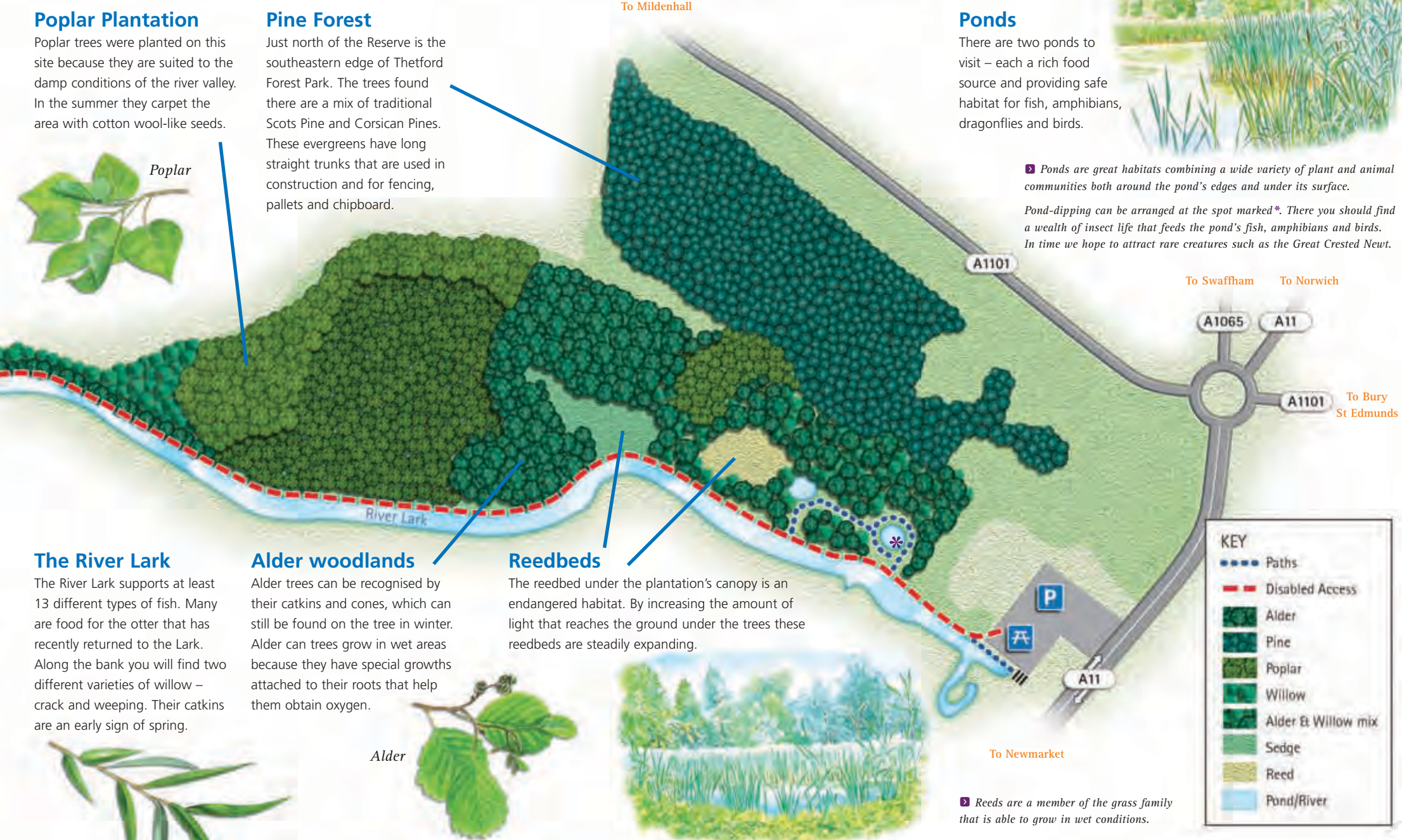
Alder trees can be recognised by their catkins and cones, which can still be found on the tree in winter. Alder can trees grow in wet areas because they have special growths attached to their roots that help them obtain oxygen.



Alder

## Reedbeds

The reedbed under the plantation's canopy is an endangered habitat. By increasing the amount of light that reaches the ground under the trees these reedbeds are steadily expanding.



To Newmarket

Reeds are a member of the grass family that is able to grow in wet conditions.

Just a short walk along the riverbank and you explore six different habitats